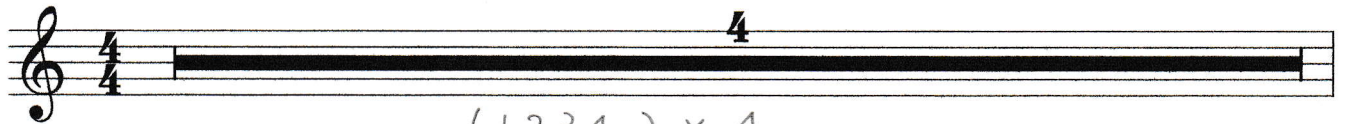


もっくん

# テキーラ



(1234) x 4

Handwritten musical score for the first section, labeled 'A'. It consists of three staves with treble clefs. The notation includes notes and rests, with many handwritten annotations such as 'ソ', 'ソレ', 'ファ', 'ド', 'ラ' and circled numbers. A thick black bar with the number '8' below it spans the bottom of this section.

(1234) x 8

Handwritten musical score for the second section, labeled 'B'. It consists of two staves with treble clefs. The notation includes notes and rests, with many handwritten annotations and circled numbers.

Handwritten musical score for the third section, labeled 'C'. It consists of two staves with treble clefs. The notation includes notes and rests, with many handwritten annotations and circled numbers. Below the staves, there are four bars with numbers 1-4, labeled 'D'.

Handwritten musical score for the fourth section. It consists of one staff with a treble clef. The notation includes notes and rests, with many handwritten annotations and circled numbers.